



Venue Rentals

The Athens Olympic Museum is situated in the western section of the former International Broadcasting Center (IBC), originally built for ATHENS 2004, now housed within Golden Hall Shopping Center, on Kifissias Avenue.

It is accessible via a footbridge connected to the Athens Olympic Center “Spiros Louis” (OAKA).

Golden Hall Shopping Center, hosting 147 stores, a variety of fine and casual dining restaurants, exclusive delicatessens, and cafes, has been honored with the prestigious international distinction of the Best European Shopping Center Award. Additionally, it offers an underground parking facility with 1,600 parking spaces.



The Athens Olympic Museum is a **state-of-the-art institution** that curates the tangible and intangible Olympic heritage in Athens, serving as a hub of knowledge for all generations.

It employs **cutting-edge technology** and **principles of experiential design** to enhance its visitors' educational experience.

With a focus on the legacy of the Athens Olympic Games, the Museum highlights the deep connection between **Sports, Education and Culture**.

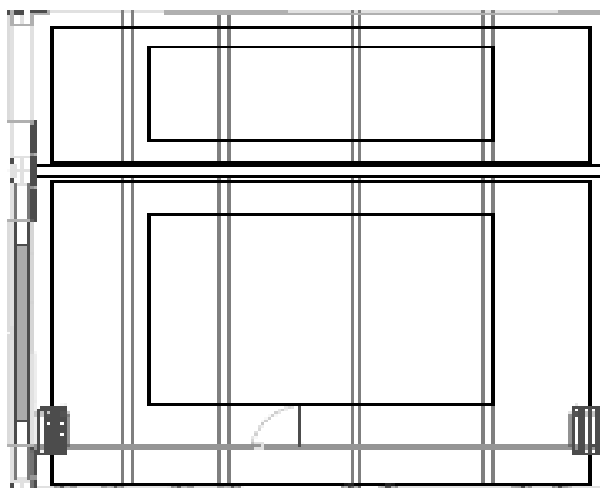
Through its mission, the Museum:

- **Educates** on the history and legacy of the Olympic Games, with a focus on the **principles and philosophy of Olympism**.
- Highlights the significant **role of Greece** in shaping the **Olympic Movement**.
- Pays **tribute to Greek Olympians** and the whole of the Olympic Family.
- Acts as a **source of inspiration** through athletes' narratives, stories and accomplishments.



1896 Event Hall

Floorplan



The 1896 Event Hall is located on the second floor of Athens Olympic Museum.

It offers a blend of sophisticated aesthetics, unique design and state-of-the-art audiovisual technology.

Services:

- Technical support
- Catering: provided upon arrangement with a reliable, external catering partner

Technical Equipment:

- 16:9 full HD projection screen and overhead projector
- 5 panel microphones and 1 wireless microphone
- Sound system installation



Up to 120 guests
(depending on the set-up)



Total surface:
160 sq.m.

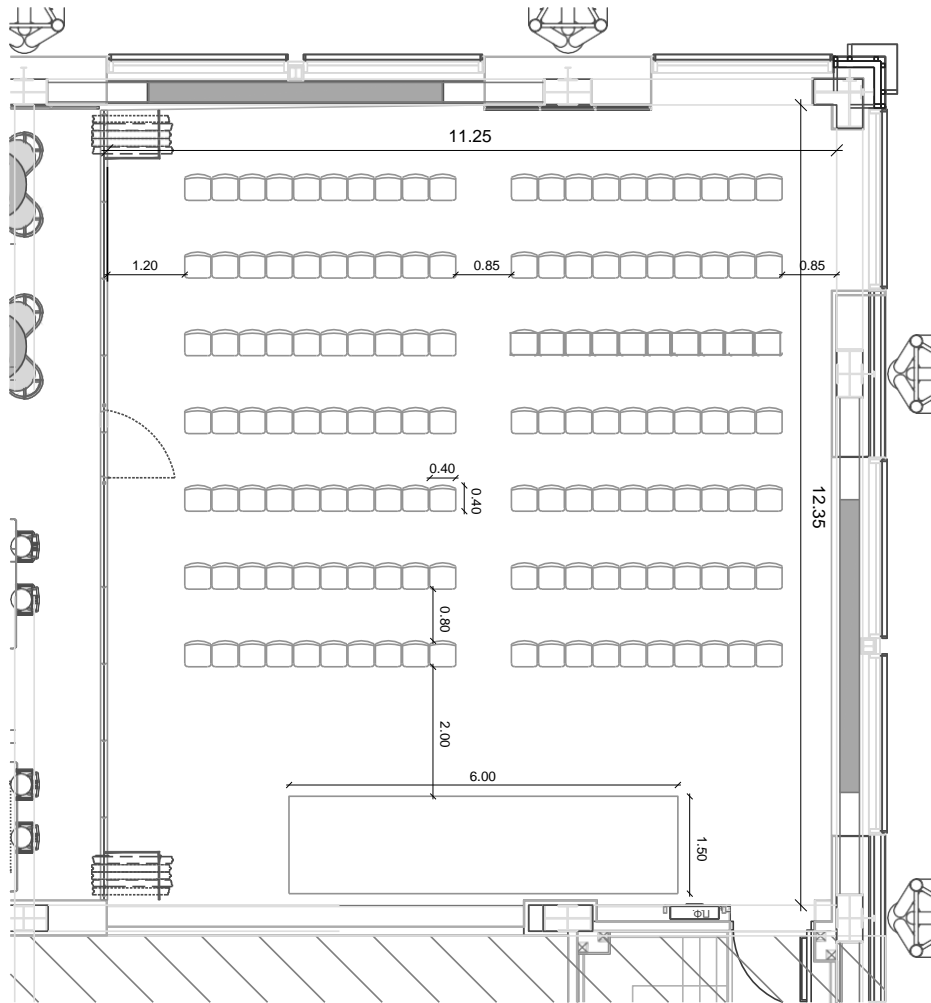


Ολυμπιακό Μουσείο
Αθήνας
Athens Olympic Museum



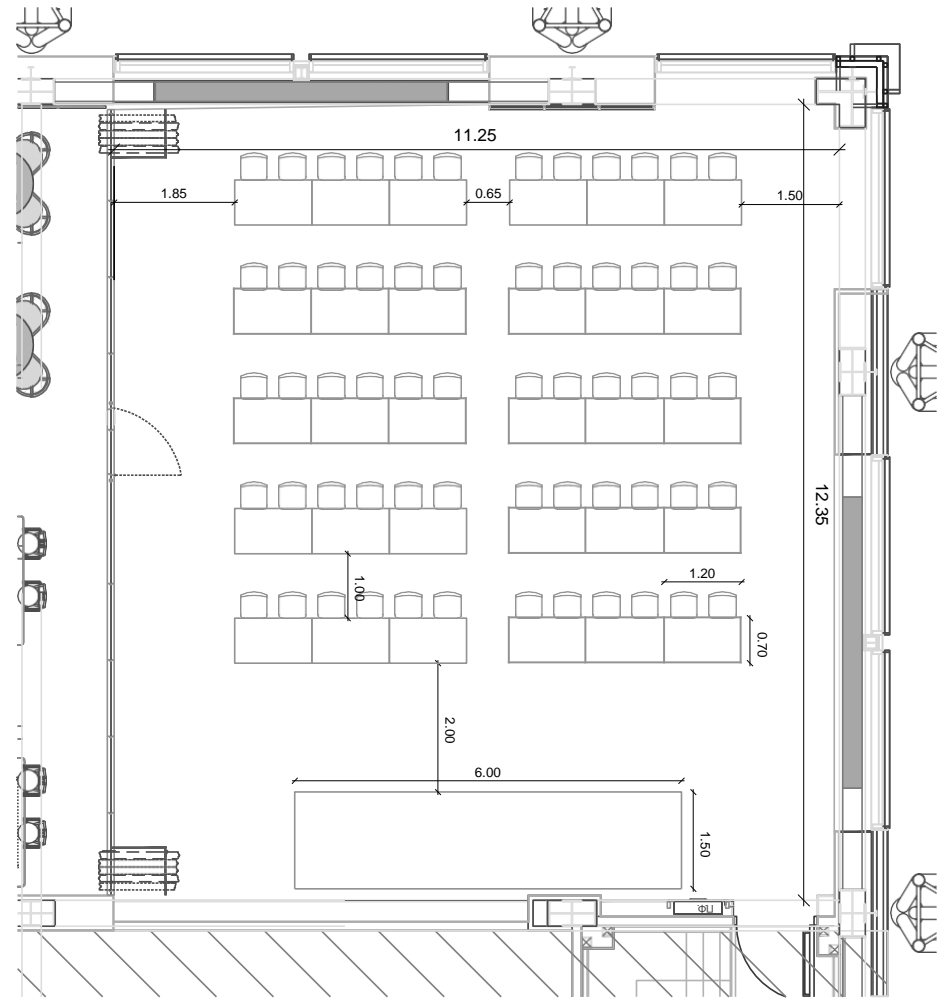
1896 Event Hall

Seating Arrangements: Theatre / Classroom




Theatre Style


140
seats

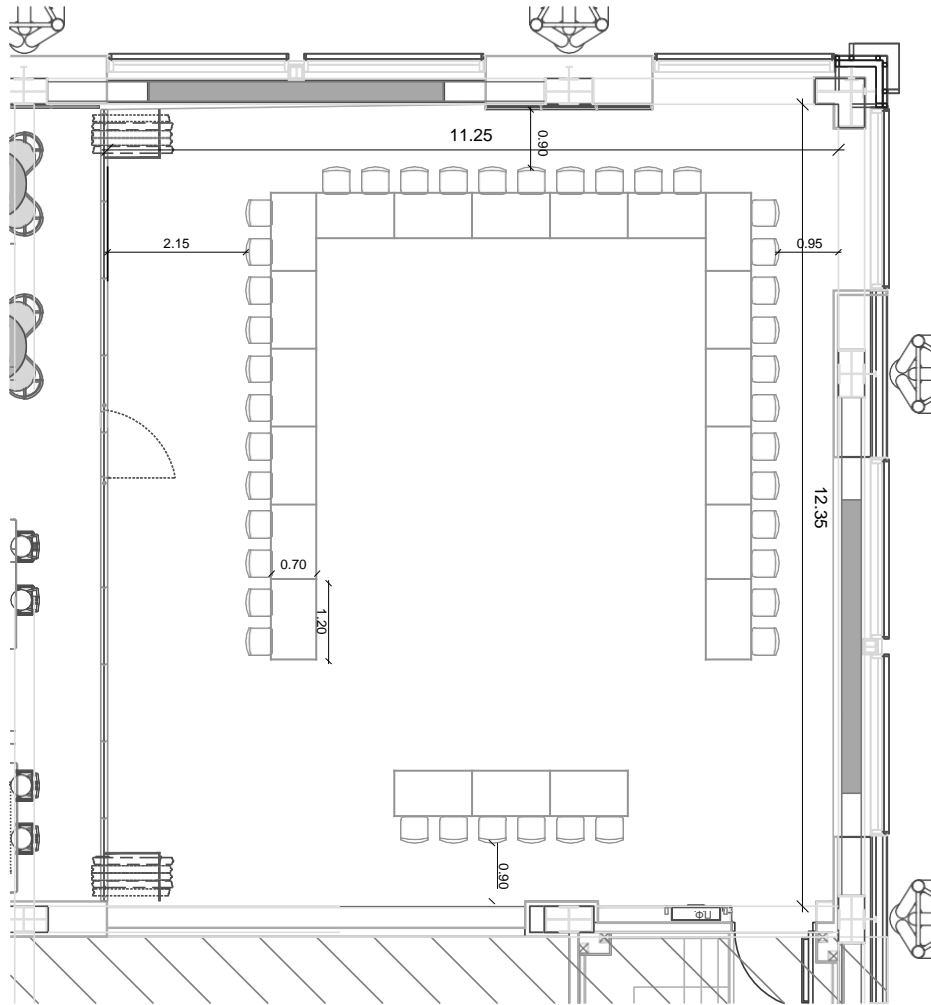


Classroom Style


60
seats

1896 Event Hall

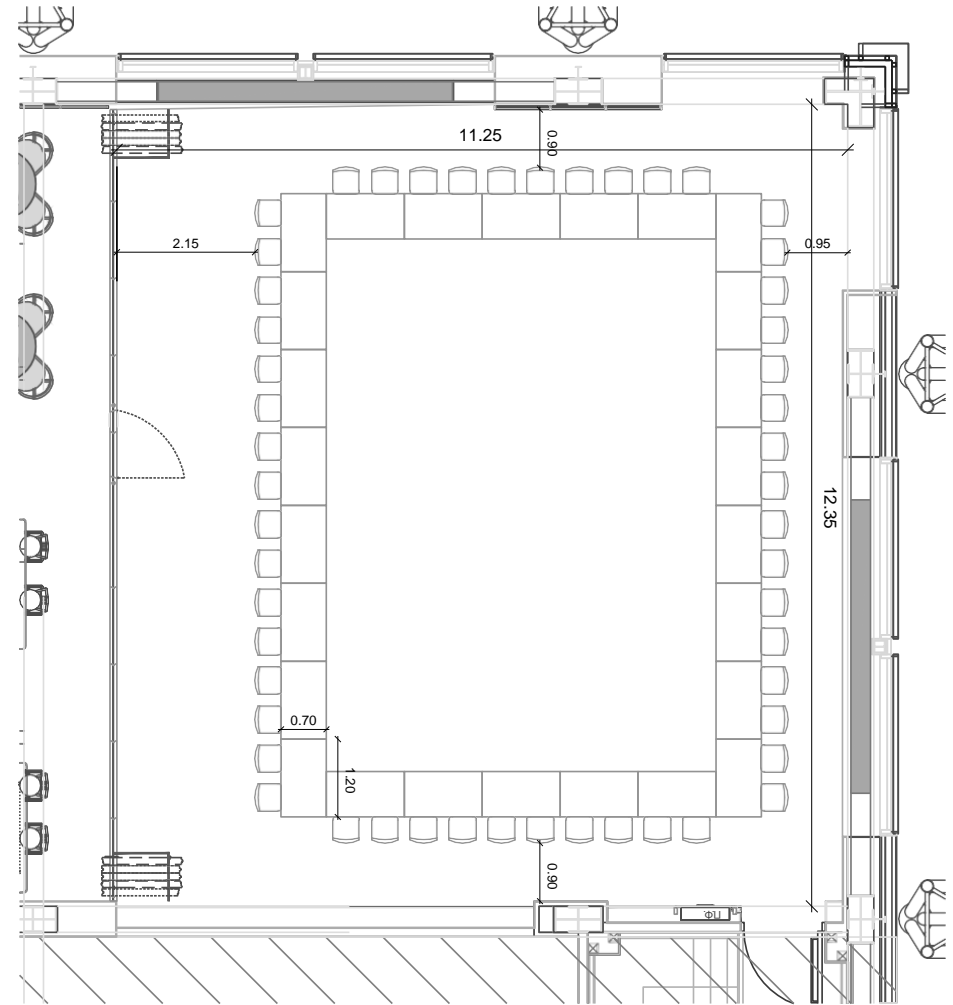
Seating Arrangements: U-Shaped / Boardroom



U-Shaped Style



40
seats



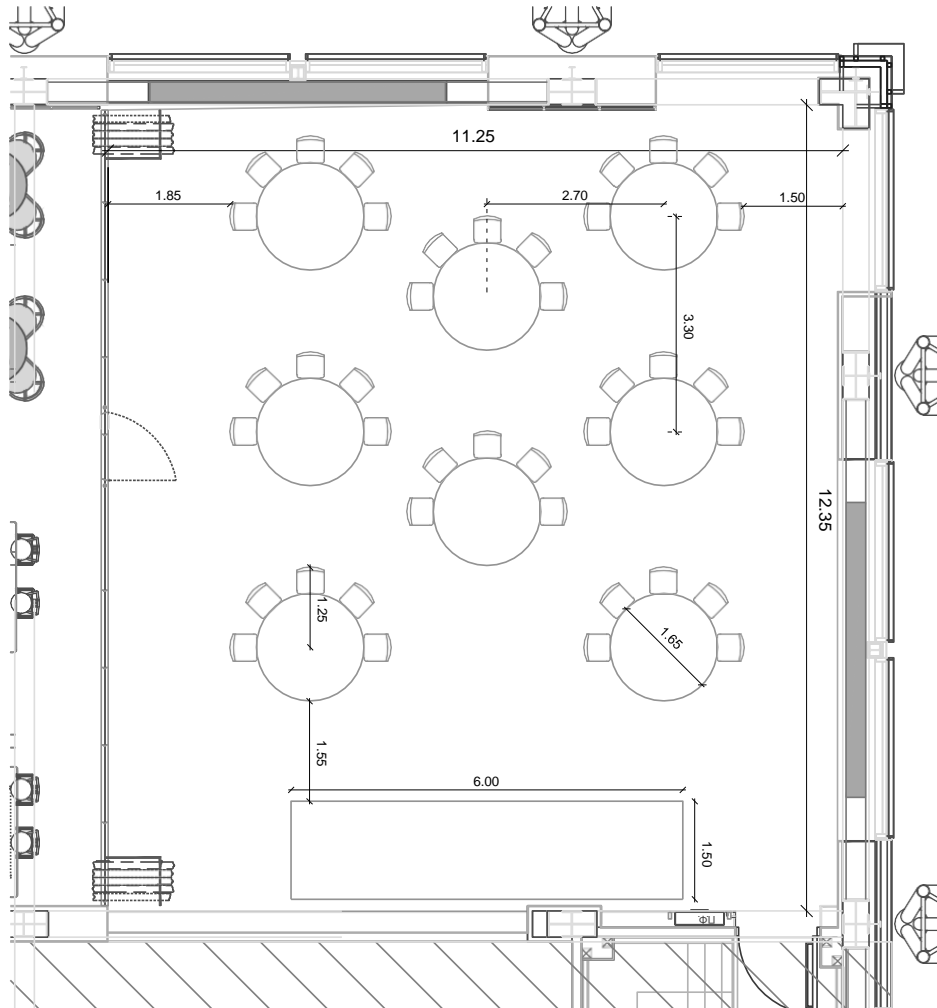
Boardroom Style



52
seats

1896 Event Hall

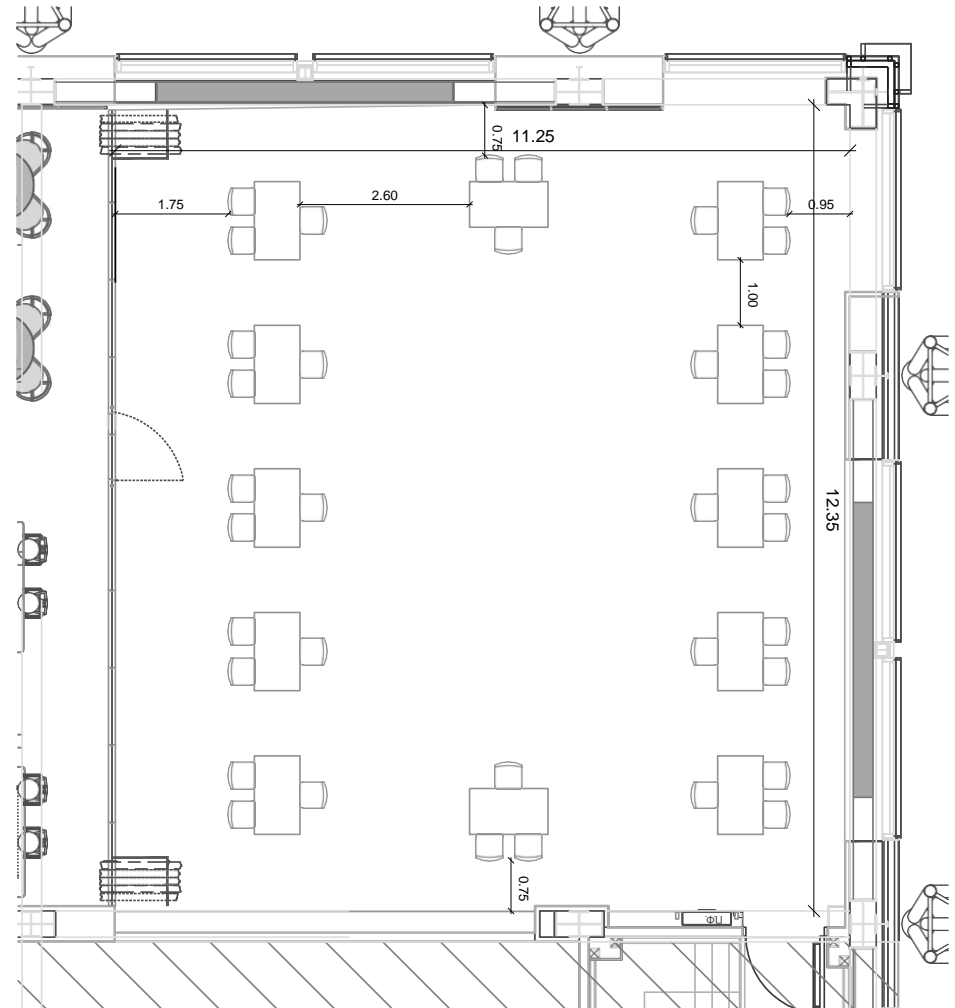
Seating Arrangements: Cabaret / 1 on 1



Cabaret Style



40
seats



1 on 1 Style



36
seats

Foyer 1896

The Foyer 1896 is located on the second floor of the Athens Olympic Museum, and is an adjoining area connected to the 1896 Event Hall. Its abundance of natural light and the panoramic views to the Olympic Athletic Center OAKA make it a distinctive venue.

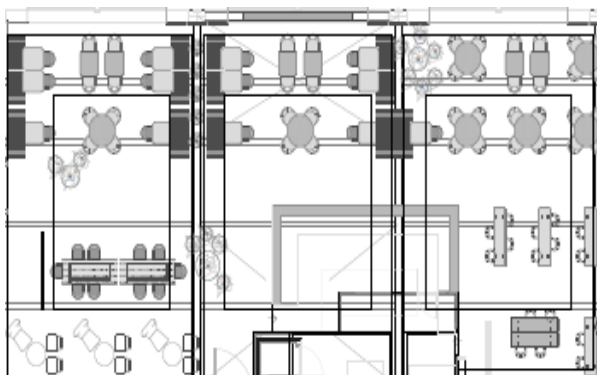
With its elegant and modern design combined with functionality, a diverse array of events can be hosted.

Services:

- Catering: provided upon arrangement with a reliable, external catering partner

Ideally situated with a private entrance, the Foyer 1896 offers convenient access to the parking area (grey zone) of the Golden Hall shopping center and to the museum.

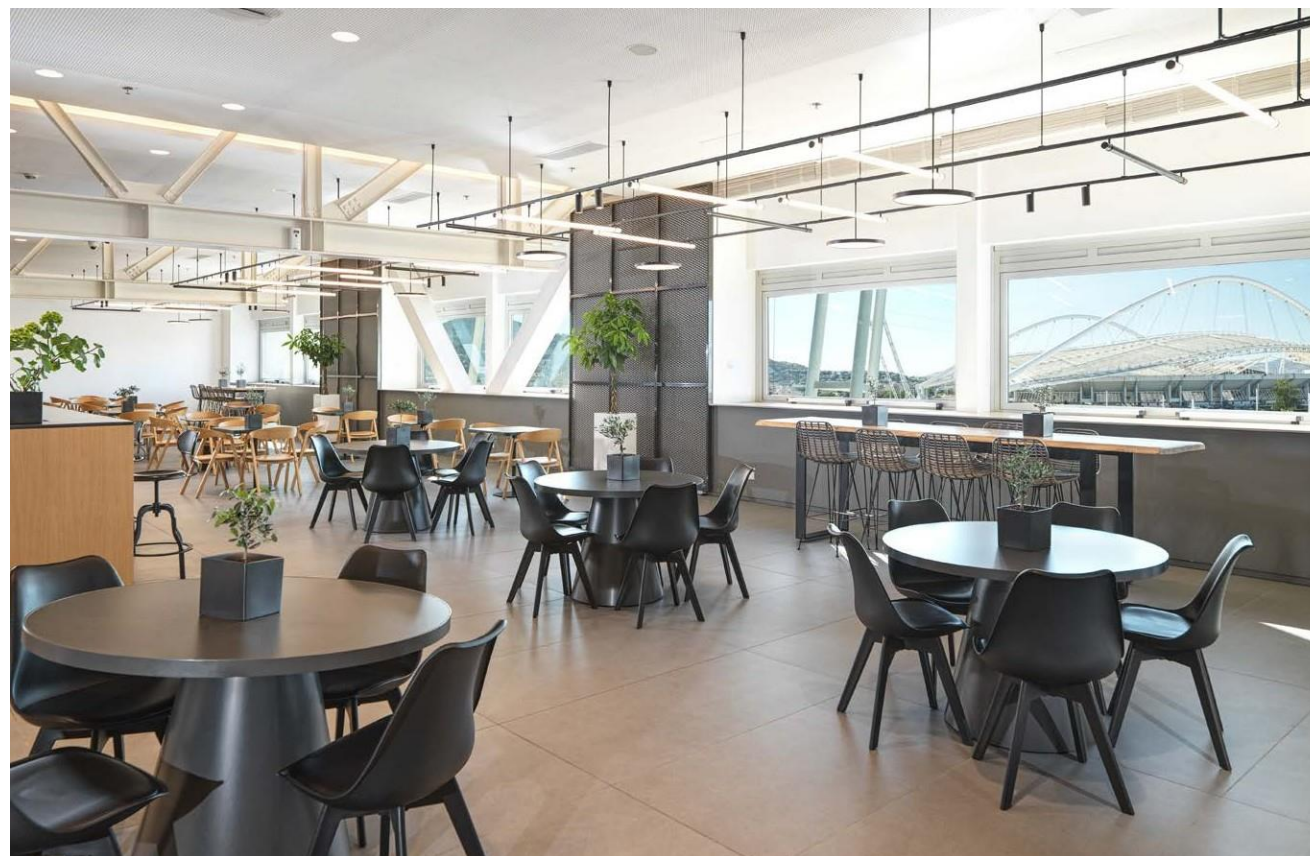
Floorplan



Up to 200 guests
(depending on the set-up)



Total surface:
350 sq.m.





2004 Event Hall

The "2004 Events Gallery" is situated on Level 1, next to the Museum's main entrance and the permanent exhibition. This **space** can be reserved for private events and special occasions.

The 2004 Event Hall is versatile and perfect for any occasion including corporate meetings, speeches, focus groups, press interviews, book launches, photography exhibitions, creative workshops, and children's parties.

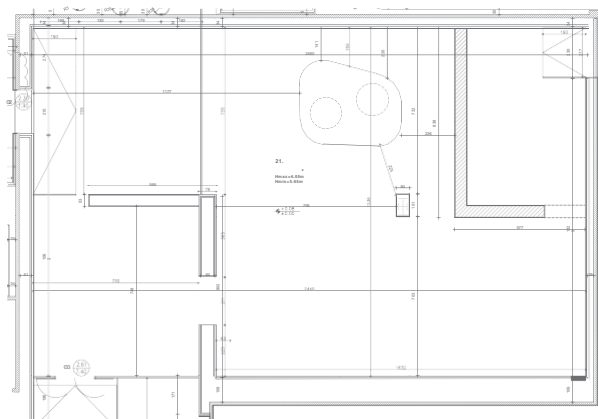
Technical Equipment:

- 16:9 full HD projection screen and overhead projector
- 5 panel microphones and 1 wireless microphone
- Sound system installation (bluetooth speakers)

Services:

- Catering: provided upon arrangement with a reliable, external catering partner

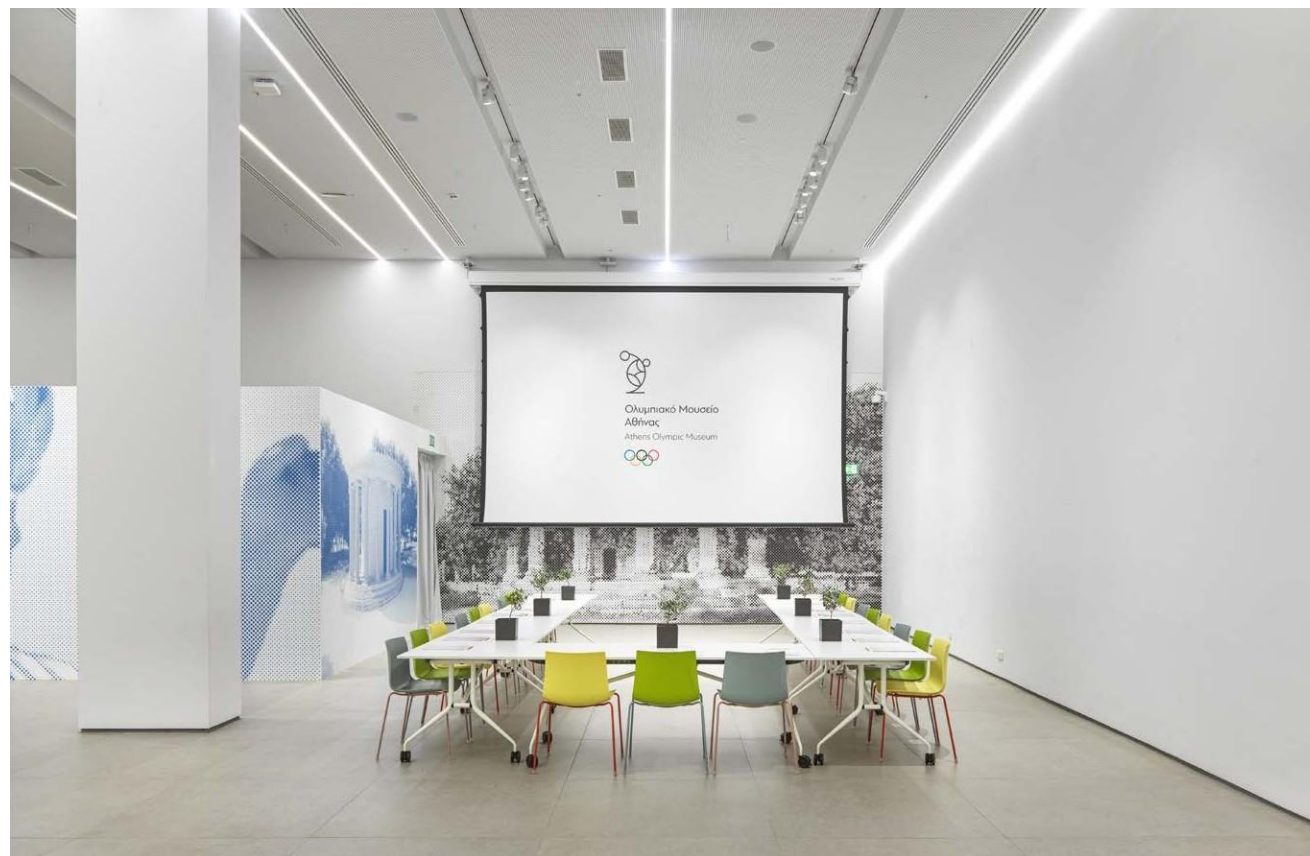
Floorplan



Up to 200 guests
(depending on the set-up)



Total surface:
370 sq.m.



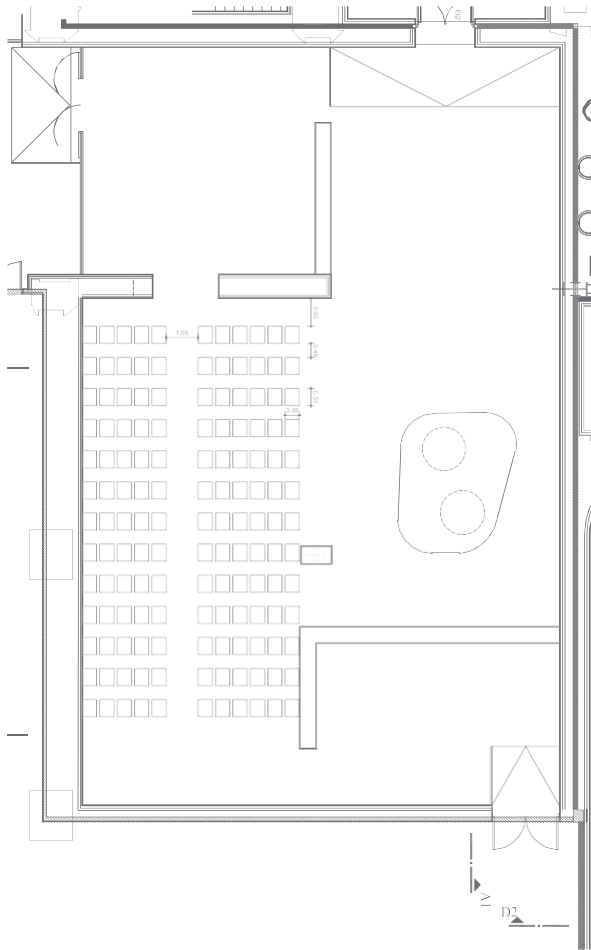


Ολυμπιακό Μουσείο
Αθήνας
Athens Olympic Museum



2004 Event Hall

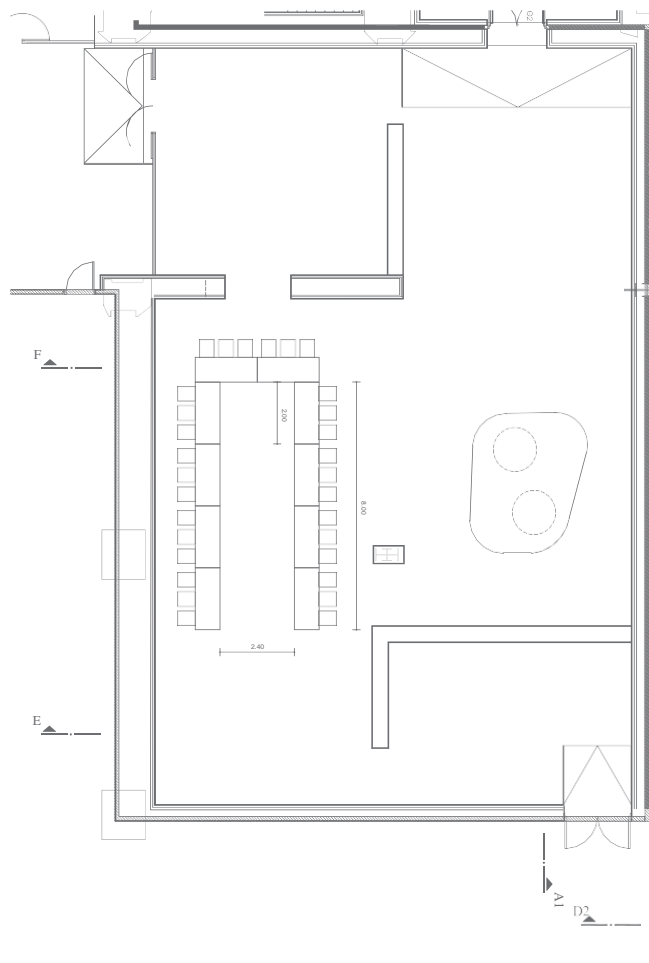
Seating Arrangements: Theatre / U-Shaped Style / School Type



Theatre Style



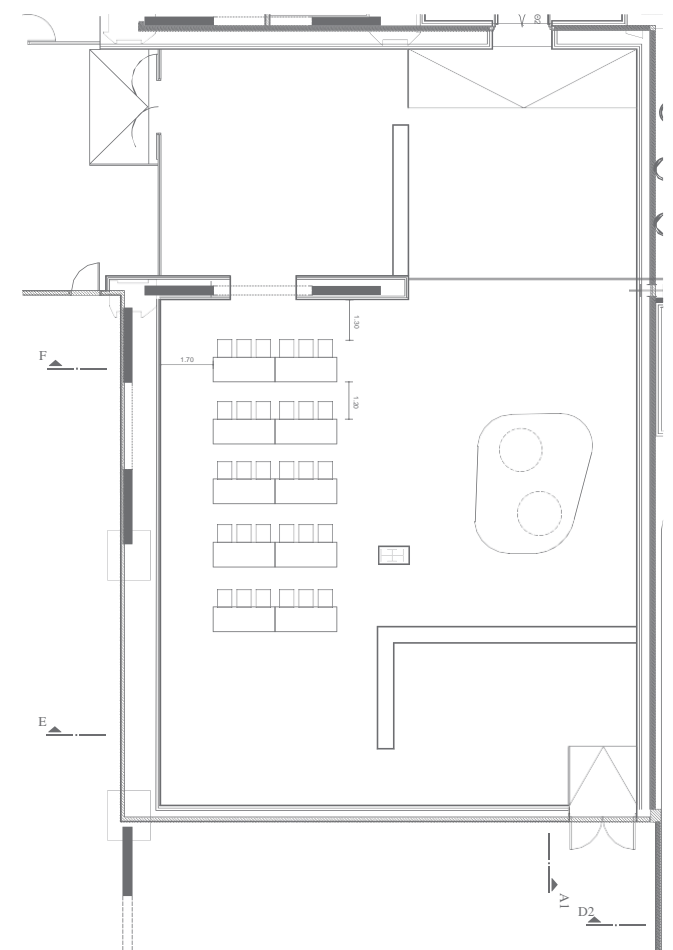
143
seats



U-Shaped Style



30
seats



School Type Style

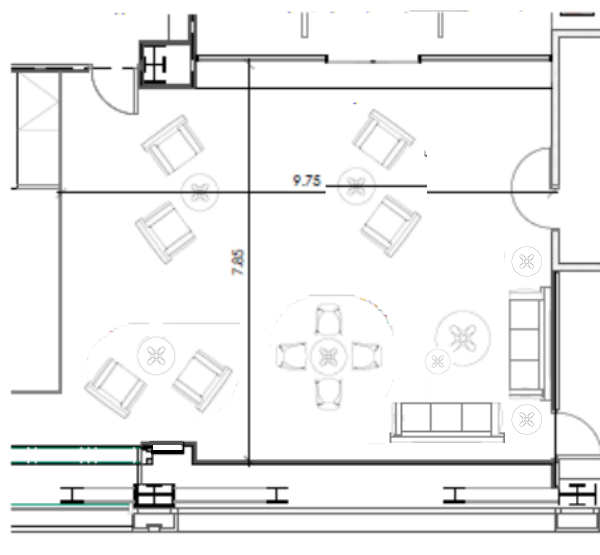


30
seats

The Lounge

The Lounge area, situated in the mezzanine floor, can be privately reserved for events. It serves as an ideal meeting point or a place to relax. Additionally, it can serve as a reception area for events held in the 1896 Event Hall & Foyer.

Floorplan



Up to 40 guests
(depending on the set-up)



Total surface:
75 sq.m.



Panathenaic Stadium Hall

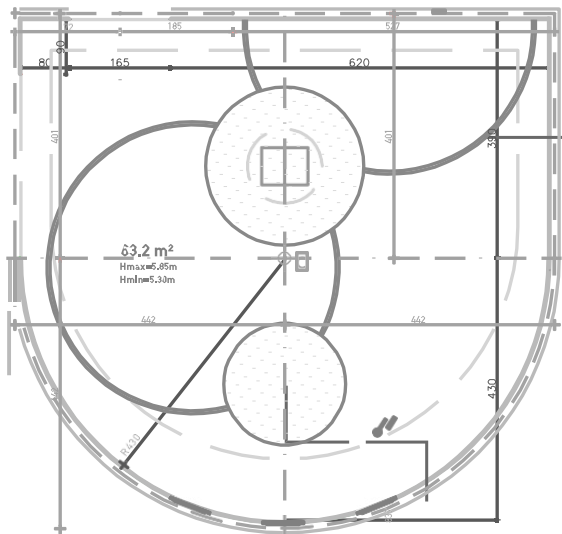
The Panathenaic Stadium Hall, located on Level 0, within the Museum's Permanent Exhibition, is ideal for presentations during small-scale private events.

The contemporary design of the **hall**, combined with the collection of original relics, offers an unforgettable experience by “travelling” visitors back to the 1896 Olympic Games held at the Panathenaic Stadium.

Technical Equipment:

- 16:9 full HD projection screen and overhead projector
- Sound system installation (Bluetooth speakers)

Κάτοψη Χώρου



Up to 35 guests
(depending on the set-up)



Total surface:
63 sq.m.



Services

The following services are available to ensure a pleasant visit at the Museum:

- A tour through the history of the Olympic Games.
- Free lockers for storing personal items
- Free Wi-Fi access is available throughout the Museum
- Easy access and parking are available through the Golden Hall shopping center Parking area



Operating Hours (Permanent Exhibition)

Winter Season (01/10 - 31/05)

Monday - Friday:

09:00 - 17:00

Saturday:

10:00 - 18:00

Monday & Sunday:

Closed

Summer Season (01/06 - 30/09)

Tuesday - Saturday:

10:00 - 18:00

Monday & Sunday:

Closed

Access

The Athens Olympic Museum is situated in the western section of the former International Broadcasting Center (IBC), originally built for ATHENS 2004, now housed within Golden Hall Shopping Center, on Kifissias Avenue. The Museum can be accessed:

-by foot:

From Level 0 - Main Entrance of the Museum

Via the footbridge connecting to the Athens Olympic Center "Spiros Louis" (O.A.K.A.).

-by car:

The entry and exit of private vehicles from the parking area is carried out, to the extent possible, through the eastern ring road of O.A.K.A. (Pittara street).





Ολυμπιακό Μουσείο
Αθήνας
Athens Olympic Museum



Athens Olympic Museum
37Akifissias Av., Maroussi

☎ +30 210 688 5560

✉ venuebookings@lamdadev.com

